

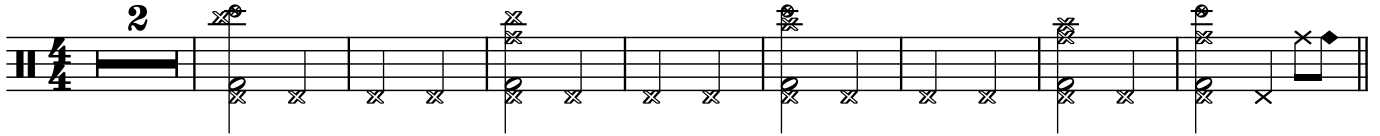
Polymath - Drums

I wish you well, but nothing good has worked

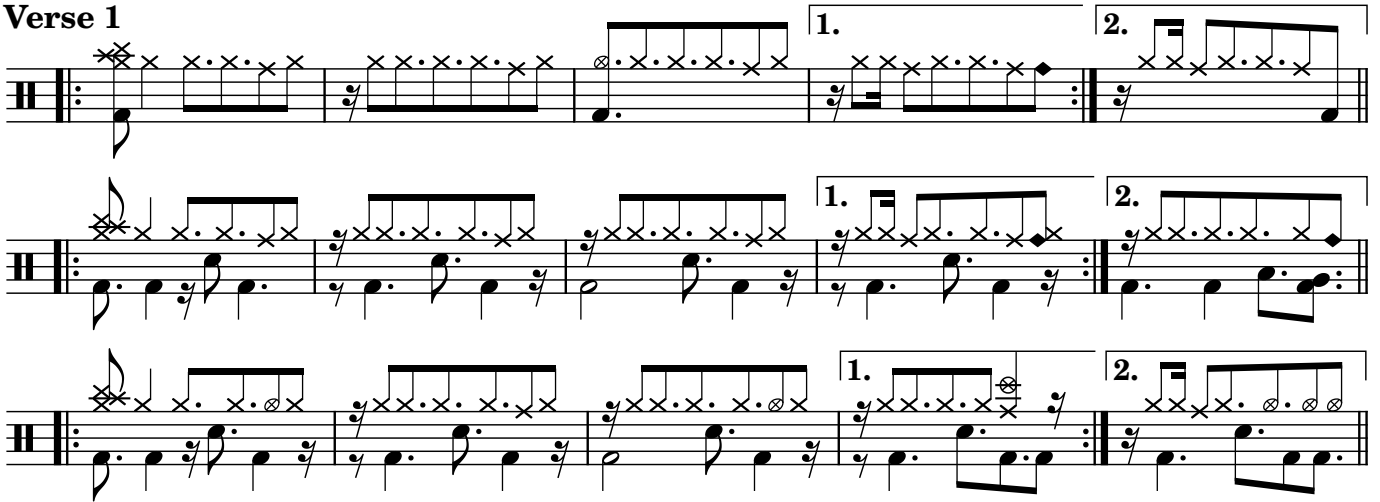
Tori Zamorski

Hazel Szoka

♩ = 135



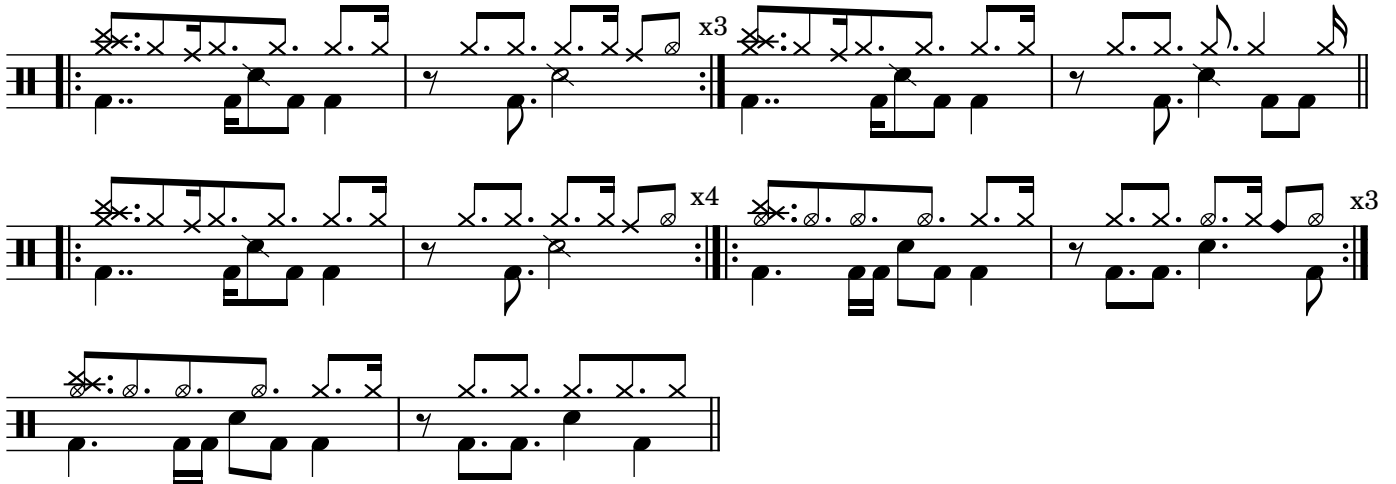
Verse 1



Chorus



Verse 2



BLEEDBERRY

Pre Chorus

Musical notation for the Pre Chorus section. It consists of two staves. The top staff is a treble clef with a key signature of one sharp (F#). The bottom staff is a bass clef. The music features a series of eighth and sixteenth notes, with a repeat sign and a 'x3' marking indicating a triple repeat. The section ends with a double bar line.

Chorus

Musical notation for the Chorus section. It consists of two staves. The top staff is a treble clef with a key signature of one sharp (F#). The bottom staff is a bass clef. The music features a series of eighth and sixteenth notes, with a repeat sign and a 'x3' marking indicating a triple repeat. The section ends with a double bar line.

Bridge

Musical notation for the Bridge section. It consists of two staves. The top staff is a treble clef with a key signature of one sharp (F#). The bottom staff is a bass clef. The music features a series of eighth and sixteenth notes, with a repeat sign and a 'x3' marking indicating a triple repeat. The section ends with a double bar line.

Outro

Musical notation for the Outro section. It consists of two staves. The top staff is a treble clef with a key signature of one sharp (F#). The bottom staff is a bass clef. The music features a series of eighth and sixteenth notes, with a repeat sign and a 'x3' marking indicating a triple repeat. The section ends with a double bar line.

D.S. with repeats

7